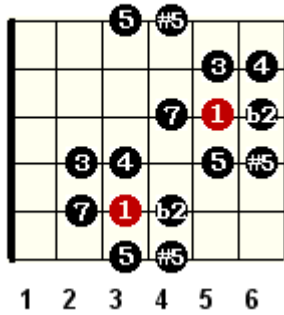
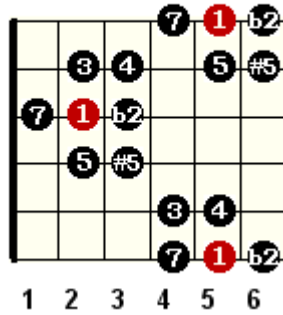


# Gammes double harmonique

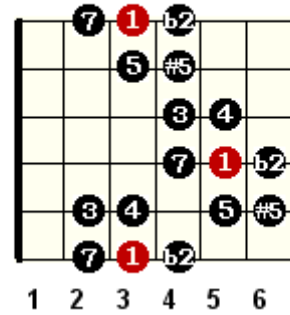
**C**



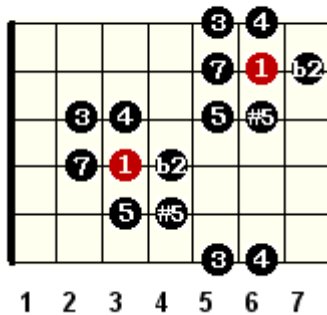
**A**



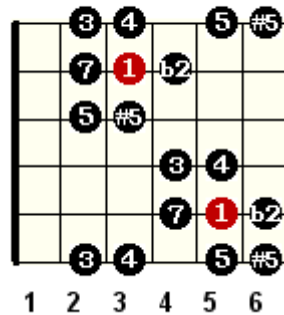
**G**



**F**



**D**



**Composition de la Gamme :**

F    2m    3    4    5    6b/5+    7M

*Harmonisation de C double harmonique :*

<b>I7M</b>	<b>IIb7M</b>	<b>III m6</b>	<b>IV m7M</b>	<b>V7/5b</b>	<b>Vib7M+</b>	<b>VII9/5b*</b>
<b>C7M</b>	<b>Db7M</b>	<b>Em6</b>	<b>Fm7M</b>	<b>G7/5b</b>	<b>Ab7M/5+</b>	<b>B9/5b *</b>

*\* accord 7/5b sans tierce  
(renversement de Db7/5+ ou plus exactement Db75+/B, 7ème à la basse)*

modes fréquemment utilisés : sur le I7M (double harmonique) et sur le IV m7M : mineur hongrois